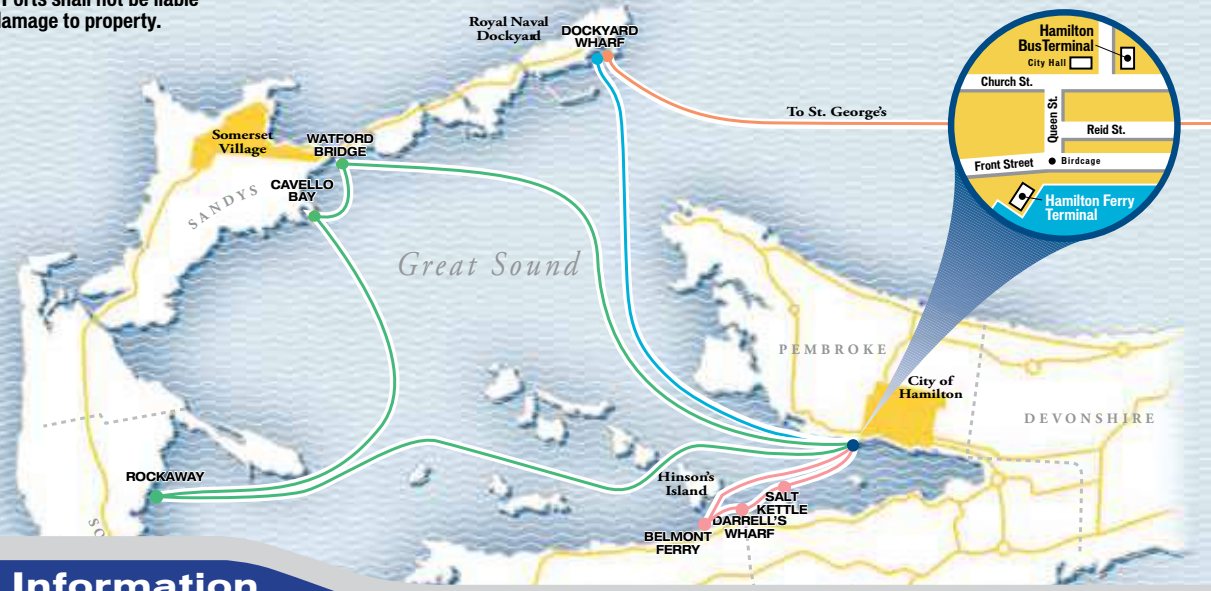


Marine and Ports shall not be liable for loss or damage to property.



SUMMER FERRY SCHEDULE

Bermuda's Convenient and Friendly Way to Travel

**EFFECTIVE
2 May 2022**

Fare Information

Passes	Passes valid on all routes on both ferries and buses.	Adult 1-Day	\$19.00	Adult Monthly Pass	\$69.00	Child 1-Day	\$9.50	Student Passes (Residents Only) All Students must present a Student Pass for free transportation. If Student Pass not presented, child (Age 5 - 15) or Adult (Age 16+) fares apply.
		Adult 2-Day	\$31.50	Adult 3-Month Pass	\$169.00	Child 2-Day	\$16.00	
		Adult 3-Day	\$44.00		Child 3-Day	\$22.00		
		Adult 4-Day	\$48.50		Child 4-Day	\$24.50		
		Adult 7-Day	\$62.00		Child 7-Day	\$31.00		

Tickets/Tokens	Please ensure you have the correct fare before boarding.	BLUE / GREEN / ORANGE ROUTE		Motor Cycles		PINK ROUTE		Holders of Special Persons Pass (Including Seniors)	
		Cash Adult	\$5.00	If paid by Cash or Token	\$4.50	Cash Adult	\$3.50	Child under age 5	Free
		Child (Age 5 - 15)	\$2.75	If paid by Pass	Free	Child (Age 5 - 15)	\$2.75		
		Tokens		Tickets (Booklet of 15)	\$37.50	Tokens			
		Adult	\$4.50	Holders of Special Persons Pass (Including Seniors)	Free	Adult	\$2.75		
		Child (Age 5 - 15)	\$2.75	Child under age 5	Free	Child (Age 5 - 15)	\$2.75		
						Tickets (Booklet of 15)	\$25.00		

Passes, Tokens & Tickets available from the Hamilton Ferry & Bus Terminals, Visitors Information Centres, sub-post offices, hotels and guest houses.

ORANGE ROUTE OPERATING DATES

MAY		JUNE		JULY		AUGUST		SEPTEMBER		OCTOBER	
Mon/Tue	2nd/3rd	Wed/Thur	1st/2nd	Mon	4th	Mon	1st	Fri	2nd	Mon	3rd
Fri	6th	Mon	6th	Wed/Thur	6th/7th	Wed/Thur	3rd/4th	Mon/Tue	5th/6th	Fri	7th
Tue/Wed	17th/18th	Wed/Thur	8th/9th	Mon	11th	Mon	8th	Wed	7th	Mon/Tue	10th/11th
Thu	19th	Mon	13th	Wed/Thur	13th/14th	Mon	15th	Mon	12th	Wed	12th
Mon	23rd	Wed/Thur	15th/16th	Mon	18th	Wed/Thur	17th/18th	Tue/Wed	13th/14th	Mon	17th
Wed	25th	Mon	20th	Wed/Thur	20th/21st	Mon	22th	Mon	19th	Tue/Wed	18th/19th
Thu/Fri	26th/27th	Wed/Thur	22nd/23rd	Mon	25th	Tue/Wed	23rd/24th	Mon/Tue	26th/27th	Mon	24th
Mon	30th	Mon	27th	Wed/Thur	27th/28th	Mon	29th	Wed	28th	Tue/Wed	25th/26th
		Wed/Thur	29th/30th			Wed	31st			Fri	28th
										Mon	31st



GOVERNMENT OF BERMUDA
Department of Marine and Ports

Hamilton Ferry Terminal open Monday - Friday 7am - 7pm • Saturday, Sunday and Holidays 8:30am - 6:00pm
For further information please call Hamilton Terminal 295-4506. Service is subject to change.
For ferry scheduling information please visit www.marineandports.bm

Hamilton • Royal Naval Dockyard BLUE ROUTE

MOTOR CYCLES NOT ALLOWED ON THIS ROUTE

Monday - Friday

Leave Hamilton	Leave Dockyard	Arrive Hamilton
7:30	8:00	8:20
8:00	9:30	10:00
9:00	On to St. George's	-
9:30	10:30	10:50
10:15	11:00	11:30
11:45	12:30	1:00
1:30	2:15	2:45
3:15	4:00	4:30
5:00	5:45	6:15
6:30	7:15	7:45
7:30	8:00	8:20
8:30	9:00	9:20
9:00	9:45	10:15
10:30	-	-

Times in Red are for Wednesdays Harbour Nights Only

Saturdays and Sundays

Leave Hamilton	Leave Dockyard	Arrive Hamilton
9:00	9:45	10:15
10:30	11:15	11:45
12:00	12:45	1:15
1:45	2:30	3:00
3:15	4:00	4:30
4:45	5:30	6:00
6:15	7:00	7:30

Service is subject to change. For further information please call Hamilton Terminal 295-4506. Hamilton Ferry Terminal open Monday - Friday 7am-7pm • Saturday, Sunday and Holidays 8:30am-6pm Marine and Ports shall not be liable for loss or damage to property.

*St. George's, Hamilton, Dockyard and Rockaway are accessible to persons with disability. *Limited size wheelchairs for St. George's, see crew for assistance.

Hamilton • Watford Bridge • Cavello Bay • Rockaway GREEN ROUTE

MOTOR CYCLES NOT ALLOWED ON WATFORD BRIDGE AND CAVELLO BAY

Monday - Friday

Leave Hamilton	Leave Watford Bridge	Leave Cavello Bay	Leave Rockaway	Arrive Hamilton
6:40	7:00	7:10	7:20	7:45
7:45	8:00	8:10	8:20	8:45
4:10	4:50	4:40	4:30	5:20
5:20	6:00	5:50	5:40	6:20
6:20	7:00	6:50	6:40	7:20

Royal Naval Dockyard • St. George's ORANGE ROUTE

MOTOR CYCLES NOT ALLOWED ON THIS ROUTE

SEE OPPOSITE SIDE FOR OPERATING DATES

Monday - Friday

Leave Dockyard	Leave St. George's
9:45	10:45
11:45	2:00
3:00	4:00
5:00	6:00

Hamilton • Paget • Warwick PINK ROUTE

MOTOR CYCLES NOT ALLOWED ON THIS ROUTE

Monday - Friday

Leave Hamilton	Salt Kettle Paget	Darrell's Wharf Warwick	Belmont Warwick	Arrive Hamilton
7:15	7:40	7:35	7:30	7:45
7:45	-	8:00	-	8:10
8:15	8:40	8:35	8:30	8:45
3:45	3:50	4:00	4:10	4:25
4:30	4:35	4:40	4:45	5:00
5:20	5:25	5:30	5:35	5:50
6:20	6:25	6:30	6:35	6:50



For ferry scheduling information please visit
www.marineandports.bm

Passenger Policies

Our ferry crews regularly hold drills to ensure they are prepared to respond in the unlikely event of an emergency. All ferries and safety equipment, including personal flotation devices (PFDs), are regularly inspected in accordance with local regulations, codes and safety standards. Our goal is to provide you the safest most enjoyable experience with SeaExpress. In order to mitigate any potential risks associated with passengers either to themselves, the crew, staff, or the vessels, the following policies are to be adhered to.

Prohibited Behaviours include but are not limited to:

- Smoking on the ferry or in the terminal areas.
- Illegal drugs or drug paraphernalia.
- Consumption of personal alcohol on the ferry or in the terminal areas.
- Vulgar language or gestures, physical violence, harassment, threats, etc.
- Any conduct deemed unsafe or disruptive.
- Throwing objects from the ferry.
- Vandalism, destruction, graffiti or marking of any facility or vessel.
- Sitting in or blocking the aisles or stairwells. Unruly children or passengers will not be tolerated.

Other On-Onboard Considerations:

- Passengers or unauthorized persons are usually not allowed in the wheelhouse.
- No pets or animals are allowed in cabin areas, with the exception of service animals, without the express permission of the Master. Dogs should be leashed, under the control of the owner, and not allowed to remain inside the cabin areas or on the seats.
- Riding on ramps, piers and slipways is hazardous. Before boarding the ferry, dismount and walk your bike onboard and if necessary, ask a crew member for assistance.
- Ask a crew member if uncertain where to safely secure your bike.
- Passengers should be dressed with shirts at all times.
- Boarding is usually by the passenger access system or gangway. Where provided, please hold handrails and avoid carrying heavy luggage or items.
- Some decks feature raised or recessed lashing points and other trip hazards. Please watch your step at all times and use the designated walkways.
- Hold onto the handrails where provided. Due to the ferry designs, stairways are steep and present a hazard, particularly when wet.
- Pay attention and take care not to trip on open decks and when using doorways with raised sills.
- Inappropriate footwear (flip flops, cycling shoes and high heels) are not well suited for climbing stairs or crossing decks. Please take extra care to maintain your footing, especially on the terminal deck.
- Please no feet/shoes on the ferry seating, and no lying down or preventing access to passenger seating areas.
- Please pay attention to safety announcements and/or notices.
- Cell Phone Courtesy - keep your voice and laughter as low as possible, and avoid profanity.
- Use of headphones is required when playing music or gaming.
- Eating is allowed but all trash and belongings should be removed by passengers before disembarking the ferry.
- Please use extra caution in strong winds and prepare for unexpected ferry movements, as this may result in doors suddenly closing shut. For your safety, please keep hands clear of door enclosures.
- If at any point at the ferry terminal or on the ferry while travelling you see anything believed unsafe or a medical emergency, please immediately inform a staff or crew member.
- Department of Marine and Ports Services shall not be liable for loss or damage to property.

We appreciate your help in keeping our ferry transportation system safe and secure for all to enjoy.